



PSECCO
Polar Science Early
Career Community Office

Overview of Polar Organizations for Early Career Scientists

October 29, 2025



PSECCO

Polar Science Early
Career Community Office

In this space, we agree to...

- Be curious and listen to understand
- Show respect and suspend judgement
- Strive to make space for others to speak, especially the quieter voices and those with different viewpoints from our own
- Consider how our social and institutional positionality may affect the impact of what we say and our awareness of what the potential impact may be
- Look for opportunities to build/expand on ideas with others; acknowledge common ground as well as differences
- Be purposeful and to the point
- Advocate if we feel like an unsafe space has been created

Land acknowledgement



Photo credit: Meghan Sharp



PSECCO

Polar Science Early
Career Community Office



WOMEN IN THE ARCTIC
AND ANTARCTIC
@ARCTIC_IN



IASC



Polar STEAM
Education. Art. Science.



IASSA
INTERNATIONAL ARCTIC SOCIAL
SCIENCES ASSOCIATION



APECS

Association of Polar Early Career Scientists



APECS is an **international** and **interdisciplinary organization** for **early career researchers** with interests in the **polar** and **alpine regions** and the **wider cryosphere**.

Opportunities include: networking, fellowships, representative positions, authoring publications & much more

Virtual Ice Community Engagement (VICE) Squads



FOSTER COMMUNITY

A more just, equitable, and diverse community for all.



ADVOCATE FOR CHANGE



SHARE RESOURCES

Gear sharing (created by Marion McKenzie); knowledge, experience, and other resources

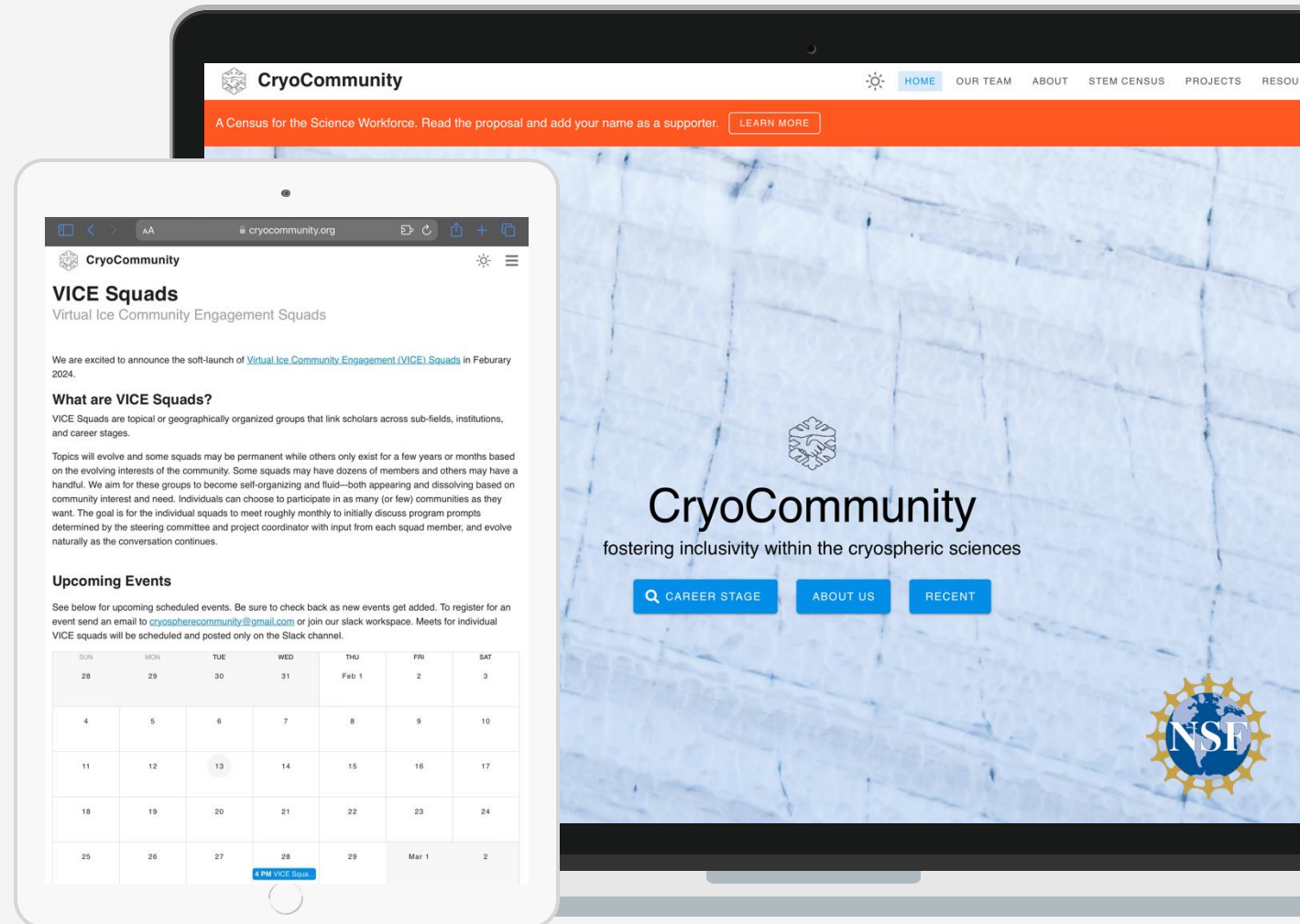
JOIN US ON SLACK



x



VICE
Squads





Interagency Arctic Research Policy Committee (IARPC): Collaborating to enhance Arctic research

IARPC Agencies & Arctic Research Plan





IARPC Collaborations - Get Involved!

[Home](#)[About](#)[Arctic Research Plan](#)[Supporting Arctic Research](#)[News](#)[Sign in](#)[Request an account](#)

A hub for building connections and
facilitating research for a thriving
Arctic and Earth.

[Learn More](#)

International Arctic Research Center



Understanding the Arctic to
make a difference.

Interdisciplinary
research that is
community-centered.

Find us at AGU,
AMSS, AFE, and
ASSW / AOS!



Emily Lescak • Research Coordinator • elescak@alaska.edu



iasc.info



INTERNATIONAL
ARCTIC
SCIENCE
COMMITTEE



IASC.INFO

IASC Fellowship
Program

IASC Cross-Cutting
and Working Group
Proposals

ASSW 2026 &
ASSW 2026 Science
Day - Call for
Abstracts



IASSEA
INTERNATIONAL ARCTIC SOCIAL
SCIENCES ASSOCIATION

- 1990 founded in Fairbanks, Alaska
- Elected **council** of 9
- **General Assembly** every 3 years at **ICASS** – International Congress of Arctic Social Sciences
 - The next one will be held in **Nuuk** in **May 2027**
- **IASSEA objectives** are among others focused on cooperation and participation in Arctic research as well as promotion of mutual respect, communication, and collaboration between social scientists and northern people
- Newsletter **Northern Notes**, published twice yearly
- IASSA hosts four **working groups**
- **NEW: IASSA Indigenous Aunties Mentorship Program**



Contact us:

IASSA President Maria Ackrén
maac@uni.gl

IASSA Secretary Norja Walther
ncwa@uni.gl

For more info:



International Cryosphere Climate Initiative

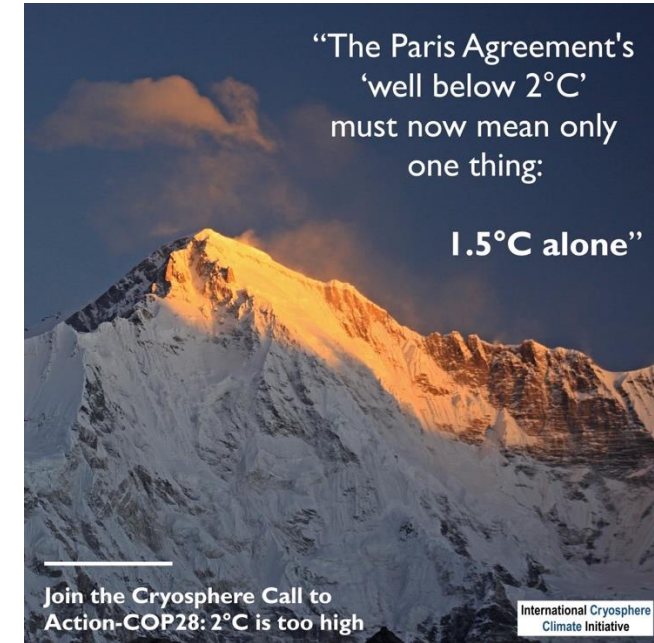
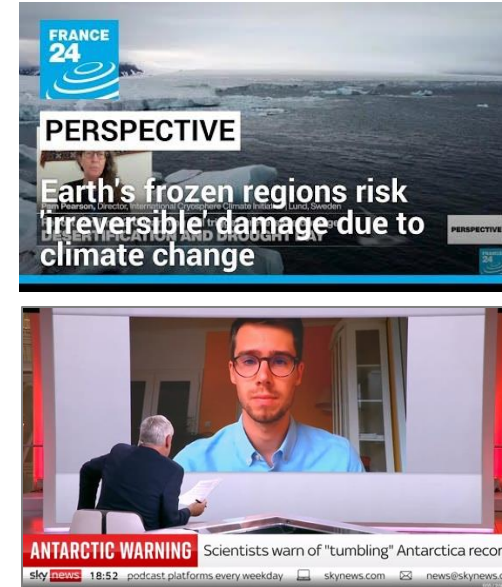
"We cannot negotiate with the melting point of ice"

Getting cryosphere science into the media

Science-policy campaigns



Annual State of the Cryosphere Reports



Working with government climate negotiators



Early career scientist volunteers at the COP Cryosphere Pavilion

International Glaciological Society Early-career Glaciologists' Group



PSECCO
Polar Science Early
Career Community Office



source: <https://aysenpatagonia.cl/atractivos/glaciar-calluqueo>



About us...



The EGG is open to any ECS (Early-Career Scientist) in glaciology or related snow and ice sciences.

Our aims are to enhance the experience of the cryosphere ECS community (socially and professionally), as well as provide additional support to ECS in cryosphere-related fields.

Current Steering Committee



Nathaniel Baurley



Tomos Morgan



Sharman Jones



Brittany Main



Tirthankar Ghosh



Raven Quilestino-
Olario



Harley McCourt



Michael Shahin



Emily Adams



Kavita Mitkari



Peter Wray



Javier Norambuena

Any many others!



IGS EGG Conference grant



- Provides financial support to early career researchers in any field of cryospheric research.
- Conferences and meetings must be fully or partly sponsored by the IGS.
 - Maximum award of £750.
 - Aim to increase participation of early-career, underrepresented minorities in cryospheric research
- More information on the webpage <https://igsegg.org/>



How to get updates



Mailing list:

Sign up: email egg@igsoc.org with the subject “mailing list” and your name and affiliation in the main email!



Twitter:

@egg_igs



Join us & get involved!



PSECCO
Polar Science Early
Career Community Office



<https://igsegg.org/>

IGS EGG socials and links!

source: <https://aysenpatagonia.cl/rutas/ruta-glaciar>

Permafrost Young Researchers Network



Our Goal:

Fostering collaboration, networking, and learning among early-career researchers in permafrost science and engineering.

Scan to join
our mailing
list:



What do we do?

Host webinars on a variety of topics ranging from learning more about modelling to fieldwork planning and safety.

Host workshops at permafrost conferences (next up will be at ACOP in 2026).

Host regional events and provide funding for those looking to host their own permafrost events.



PSECCO

Polar Science Early
Career Community Office

Our Mission is to
**empower and elevate early career
scientists** in the polar sciences,
**support a vibrant
community, provide opportunities
and resources, offer skill trainings**
and **work together towards a
welcoming polar science
environment for all.**

Learn more at
www.psecco.org



Polar STEAM Collaborations

- Facilitate virtual and field collaborations with educators/artists
- To increase science communication and enhance broader impacts
- Build meaningful relationships with your collaborators over year-long period
- Polar STEAM coordinates and funds travel and equipment needs for collaborator

Researcher Eligibility:

- Funded through NSF in Polar Regions
 - using data that was NSF funded
- All research disciplines and career stages welcomed (especially early career!)
- Start recruiting again in the spring/summer



Polar STEAM
Education. Art. Science.



Oregon State
University



SCAR - Mission

- “ ... initiating, developing and coordinating high quality international scientific research in the Antarctic region (including the Southern Ocean), ...”
- “ ... provides objective and independent scientific advice to the [Antarctic Treaty Consultative Meetings](#) and other organisations such as the [UNFCCC](#) and [IPCC](#) ... ”

www.scar.org



SCAR Open Science Conference 2024
Pucon, Chile ~ 1500 attendees
Over 40% ECR participants

SCAR OSC 2026 – Oslo, Norway
8th-16th August



SCAR Capacity Building

- **Early Career Fellowships**

- PhD students or within 5 years of finishing PhD
- Five to Six Fellowships awarded each year including Prince Albert II of Monaco Foundation Fellowship funded by the Polar Initiative

- **Visiting Scholarships**

- Aimed at mid to late career researchers to undertake a short term visit to an institute in another SCAR member country

- **SCAR Medals**

- Nominations open soon – Research Excellence, International Coordination, Education and Communication



Other opportunities

- Science to Policy Fellowships from SC-ATS/AntICON
- INSTANT Mini-Fellowships
- AntClimNow Data stewardship awards

www.scar.org



USAPECS Overview

Empowering the Polar Science Community

Basics

- Founded in 2014
- Board composed of ECRs
- Stimulates interdisciplinary collaborations & develops leaders

Collaborators



Looking Forward

Challenges

- Maintaining an active and engaged membership year-round
- Financial support
- Weathering social & political unrest
- Maintaining identity within a larger organization

Lessons Learned

- Necessity of clear communication and defined roles and relationships
- Mechanisms for carrying institutional knowledge forward
- Need for dedicated volunteers

The Future

- Increase synergistic activities and collaborations
- Advance work toward greater inclusivity and equity
- Maintain relationships with alumni

Project Groups

Inclusion, Diversity, Equity, and Accessibility (IDEA)

- IDEA themes are central to USAPECS' work
- Began in 2020 amid heightened social issues
- Addresses systemic issues prevalent in polar fields
- Successfully led to the development of code of conduct, mission statement, strategy guide



Blog Series

- There have been 36 blog posts since its inception in 2018
- Features a diverse group of Early- to Mid-Career scientists and educators who share personal insights and experiences in polar science



International Polar Film Festival (PFF)

- Started in 2016, the PFF is held annually
- Features short films about the polar and alpine regions produced by researchers, community members, Indigenous Peoples, organizations, and institutions from across the world
- Next PFF is in March 2026



Webinar Series

- Webinars focus on career building skills, accessibility and inclusion in polar science, cross/trans-disciplinary perspectives, building science communication networks
- Filmmakers' Roundtable started in 2023 – 4th annual roundtable in March 2026



USAPECS/APECS attendees at the AGU 2023 Fall Conference PSECCO, Polar Impact, USAPECS Social event. From left to right: Iruichukwa Ezuakanna, Rose Leeger, Meghan Schaberg, Mohammad Afzal Shadab, Kristen Rahilly, Fairuz Ishraque. Photo Credit: Mariana Dryak-Vallies

Website



Peer-reviewed Article



US Permafrost Association

Awards that support ECRs (<https://www.uspermafrost.org/grants-and-awards>):

- UPEF Conference Travel Awards
- PEEP Conference Travel Awards
- Andrew Slater Memorial Award
- Erv Long Memorial Award
- FCP Caregiver Awards (all career stages)

Events and trainings that support ECRs:

- AGU annual meeting/banquet (networking)
- AGU mentoring lunch
- Workshops (Field safety and ADVANCEGeo Bystander Intervention)
- Technical Training Webinar Series (get prof. dev. hours)





The U.S. SCAR (US-SCAR) Office is a focal point for U.S. participation in SCAR

- The [National Academies Polar Research Board](#) serves as the U.S. National Committee to SCAR, and the U.S. Antarctic scientific community is represented by the US-SCAR Team.
- US-SCAR promotes polar science within the U.S. and the international Antarctic scientific community by facilitating the participation of U.S. scientists in SCAR activities and supporting U.S. attendance, **particularly of early career researchers**, at the SCAR [Open Science Conferences](#), the SCAR [Biology Symposia](#), and the SCAR [International Symposia on Antarctic Earth Sciences](#).

What is SCAR?

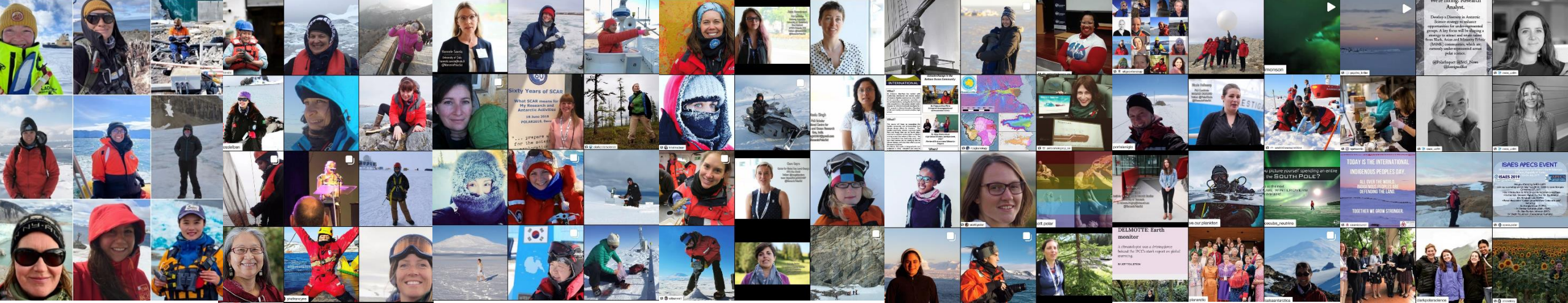
- International scientific body of the International Science Council
- 66 years facilitating Antarctic research
- 55 total members (35 countries)
- Provides scientific advice to Antarctic Treaty

US SCAR Leadership

Delegate: Allan T. Weatherwax (MIT) wxwax@mit.edu

Alternate: John Cassano (Colorado) john.cassano@colorado.edu

The [12th SCAR Open Science Conference](#) will be held in Oslo, Norway, from 10-14 August 2026, hosted by the Norwegian Polar Institute. The conference will feature an interdisciplinary programme that includes plenary lectures, parallel sessions, mini-symposia, workshops, panel discussions, posters, and social activities



Women in Polar Science Network



Interviews, Campaigns (#100PolarWomen)

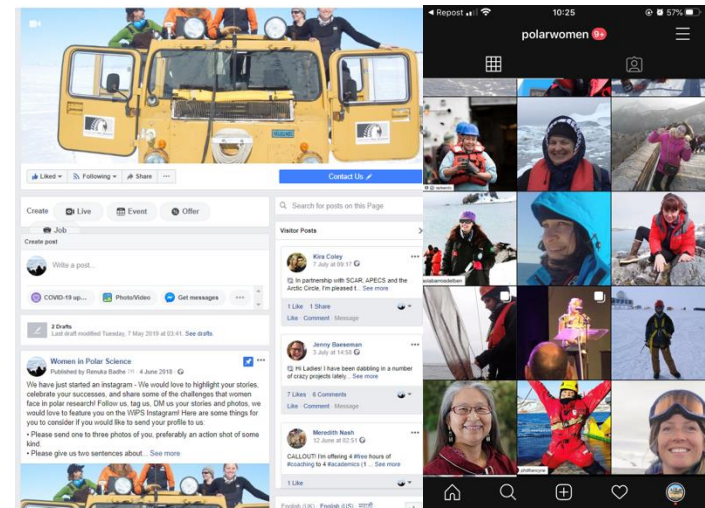
SCAR EDI Action Group, SOOS EDI AG

Standing Committee on Gender Equality in Science (SCGES)

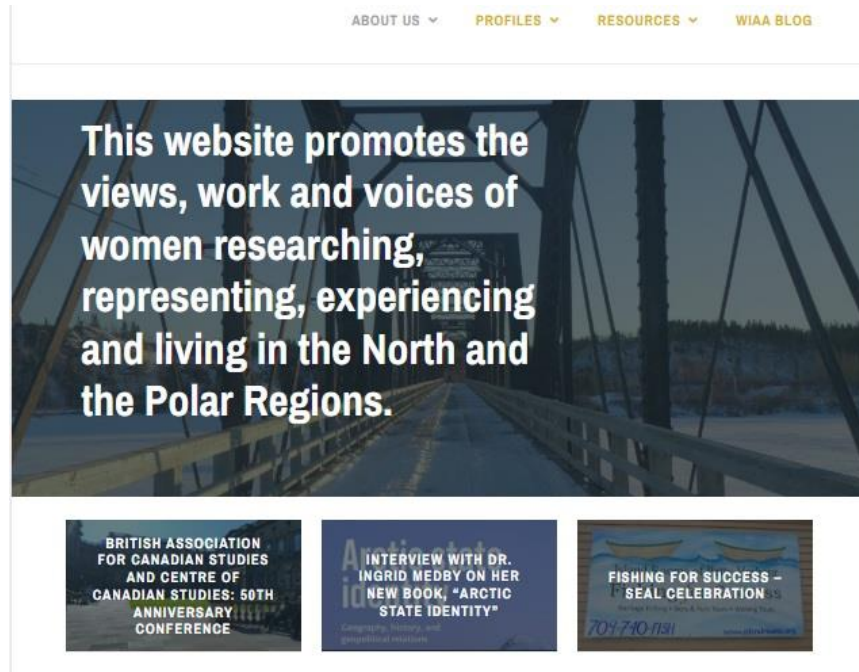
Diversity in UK Polar Science project

Large European Union funded Projects – WiPS participates in
Arctic PASSION and OCEAN:ICE

<https://womeninpolarscience.org/>



Women in the Arctic and Antarctic



Website:

www.womeninthearticandantarctic.com

Social Media:

(X): @arctic_in

(Bluesky): @warcticantarctic.bsky.social

(Facebook): @WomenintheArcticandAntarctic



PSECCO

Polar Science Early
Career Community Office

Stay involved with PSECCO!

- Now – Join our PSECCO Community Slack Channel
- November 20 – 'Creating a Stellar Job Application' Webinar
- December 15 – 19 – AGU social for early career researchers, 2 sessions!
- Connect with us via:
 - Email: psecco@colorado.edu
 - Newsletter: <https://psecco.org/join-psecco-community>
 - Social media (BlueSky, Instagram, LinkedIn, Facebook): @polarsecco



PSECCO
Polar Science Early
Career Community Office

Overview of Polar Organizations for Early Career Scientists

October 29, 2025